

X

, . . . ; . . . , . . . , . . .

, . . . ; . . . , . . . , . . .

10-18 [1- 3].

18,6%

81,4% -

[4- 7]. 80% 70%, 30% -

15-20% [8- 10].

437 31.08.2004 . "

24 17.01.2005 . "

521 26.07.2006 . "

2'2010

2008 . -

2008 80 -

.66 12 , 2007 ,

0,80% 0,33, - 0,44%. 14 , 1 ,

7,15% - , 14,3% - (71,4%) , 7,15%- 29,2%

" " (65,1%). , 55,3%

, 17,2% - , , 27,5% -

(24,1%). (20,6%)

" 13 18 (58,6%). , "

, 33,3% - , 27%

, 39,7% - , 60%

7%, 33%

51% 4%

(.1). 25%

51,3% , 2-3

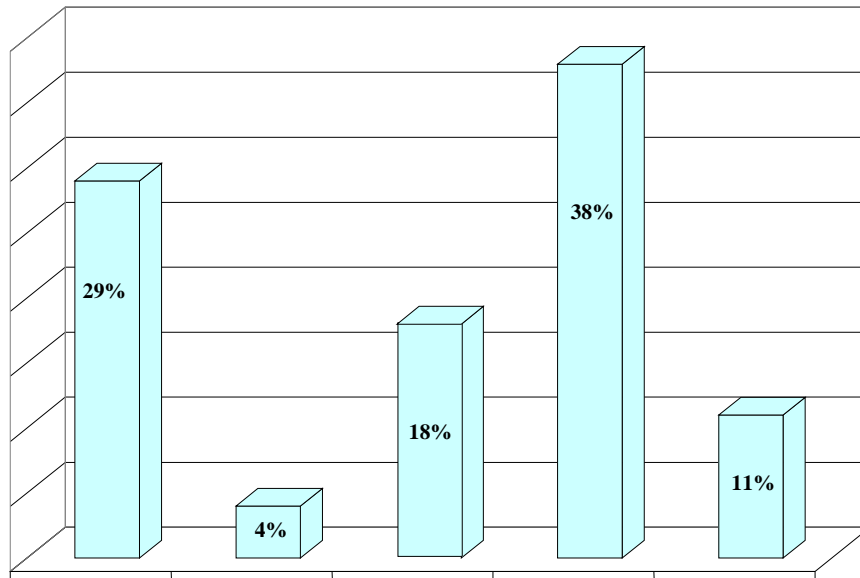
, 2,6% , 46,1% -

38,5% (53,6 ± 20,0).

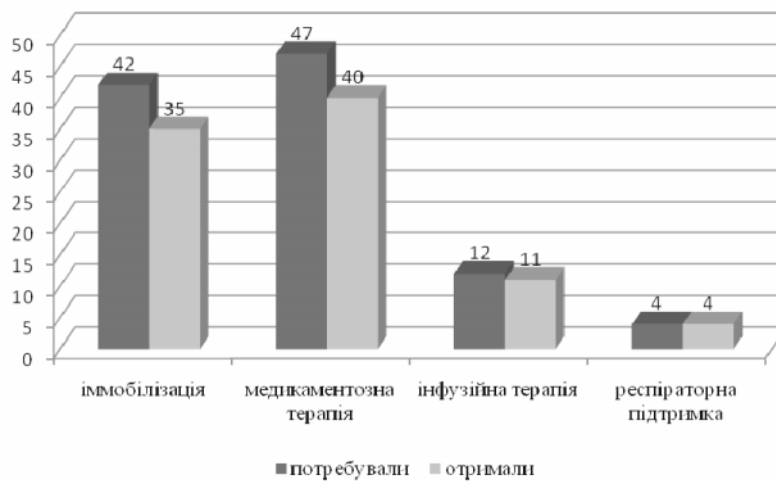
30 ,

(.2).

- 55% - 21,4 %.



1 -



2 -

ABCC.

SAM SPLINT).

(

“ABCDE”,

D (disability or neurologist status) –
E (exposure (undress))

with temperature control) –

130/ , : i () 90 . , 60
: 90 . , 10 30/ ;
- 60-130/ , - 10-30/ .

(), (), (), ().
(Baker, 1983)

i
i

i

). c

: 21,8%

- 1.
- 2.
- 3.
- 4.
- 5.
- 6.

ABCC.

SUMMARY

CHARACTER AND VOLUME OF TREATMENT MEASURES FOR EMERGENCY CARE IN CASE OF INJURIES IN CHILDREN AT TRAFFIC ACCIDENTS

V.D. Shishuk, Y.V. Shkatula
Medical Institute of Sumy State University, Sumy

In the article the authors analyzed character and volume of treatment measures for emergency care in case of injuries in children at traffic accidents. They defined the volume, terms, priority, sequence of medical care at the prehospital stage.

Key words: children, traffic accidents, emergency care, prehospital stage.

1. XVI 2006. - . 20.
2. // 2001. - . 4. - C. 23-26.
3. // 2005. - . 18-22.
4. // 2004. - 1. - . 44-47.
5. // 2006. - 136 .
6. // 2002. - . 73-79.
- 7.

2003. – . 107.
8. / : // ;
 9. // . - 2005. - .6, 1. - .9-12. / ;
 10. « » - , 2008. - . 36-38. () : [, 2007. - 455 .