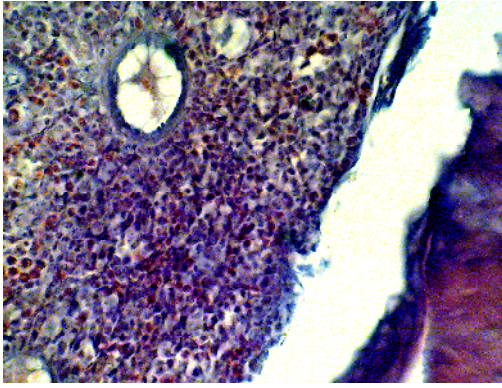


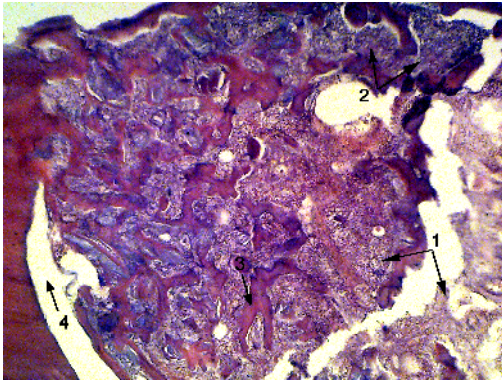
1- (15) – 2 :
; 2- (15) – , (, , , ,)
, [9].

3- , 10- , 15- , 24- [10].
10% ,
5% , 10 ,
– " " Baumer /
optronic : 05 .
« 5,0» « 5,0»
() .
« (, 2001). »

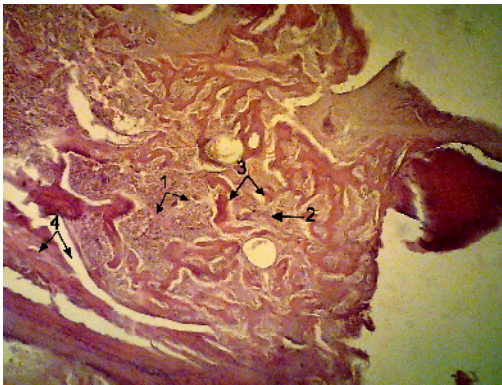
3- (. 1.)
, ,
. ,
1,62 (<0,001), – 5,13% (>0,05)
1,41 (<0,01), – 15,43%
(>0,05) () –
8,08% (>0,05).
10-
, ,
, (. 2).
1,2 (<0,05),
. ,
1,31 (<0,05),
(. 1).
, ,
15-
, ,
(. 3).



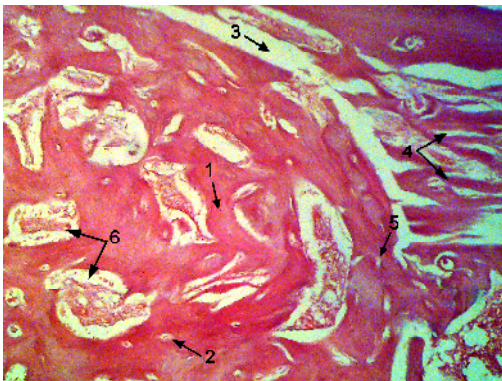
1-
3-
- X 200



2- 10-
(1)
(2)
(3)
100 (4).



3- 15-
(1)
(2).
(3).
(4).
- 50



4-
24- (1)
(2).
(3), (5),
(4), (6).
100

1,4 ($<0,01$) , ,
 ($<0,01$) , 1,3
 1,24 ($<0,05$),
 , 1,27 ($<0,05$)
 (.1).

$I -$ (/) ($\pm m, n=10$)

		10-	15-	24-
		, %		
		34,21±0,75	26,13±0,67	-
		39,27±0,93	34,41±0,78	20,41±0,75
		26,52±0,64	39,46±0,81	37,27±0,93
		-	-	42,32±0,64
		41,35±0,83*	33,27±0,82*	-
		38,5±1,76	38,28±1,52	23,08±1,22
		20,15±0,97*	28,45±0,86*	51,74±1,37*
		-	-	25,18±1,1*

* -

24-

1,68 ($<0,001$) ,
 1,38 ($<0,001$) -
 1,13 ($>0,05$) (.1).
 , 24-

SUMMARY

THE INFLUENCE OF SALTS OF HEAVY METALS ON THE HEALING OF DIAPHYSEAL FRACTURES OF LONG BONES OF THE SKELETONS OF ANIMALS OF GERIATRIC AGE

O. Korenkov

Medical Institute of Sumy State University, Sumy

According to the results of histological and morphological examination of reclaim of injured tibia it was determined that under the condition of excessive inflow of salts of heavy metals into the body of a rat there appears decrease of intensity of proliferation and differentiation of cellular elements of a reclaim, retention of forming the fibre-specific structures, their reorganization and remodeling.

Key words: reparative osteogenesis, heavy metals, fibres of reclaim.

1. «...», 2009. – 272 .
2. ... , 2009. – 208 .
3. ... , 1991. – 456 .
4. [...]// ... – 2004. – 2, 3. – .9–11.
5. ... : [...] / ... , 2006. – 112 .
6. « ... »: ... , 2004. – 272 .
7. ... , 2004. – 216 .
8. ... / ... , 2008. – 520 .
9. ... 2006 . – : ... , 2007. – .8–21.
10. ... // ... , – 2006. – 1. – .76–84.